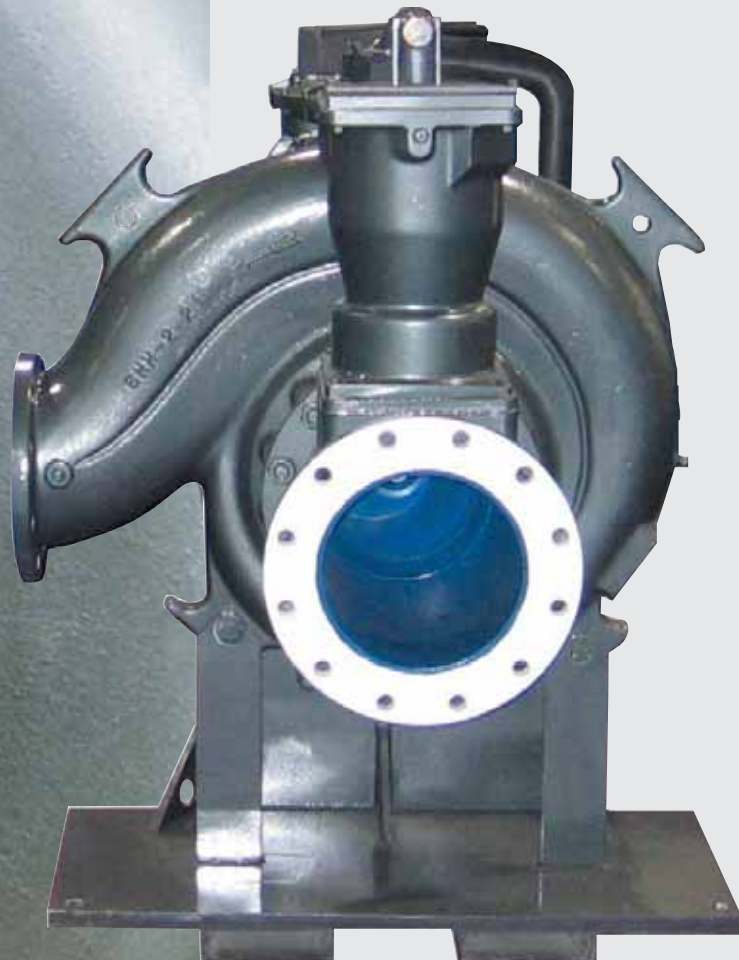


CORNELL PUMP COMPANY

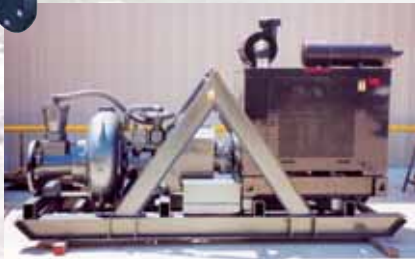
Redi-Prime[®]
Pumps



SETTING THE STANDARD

Cornell's Redi-Prime® pumps are designed and engineered for the most rugged and demanding industries; construction, industrial, rental and municipal. With over 50 years of proven experience and reliability Cornell Pump Company has established the highest industry standard for premium quality and rugged performance.

Our pumps are backed by an industry-leading two-year warranty.



Cornell Pump Company is setting the standard for the construction pumping industry. Flow characteristics that were 'good enough' before are no longer acceptable. Cornell's innovative engineering and forward thinking have made our pumps capable of producing up to 400 percent more flow than the construction industry standards.

Cornell's hydraulic efficiencies reach well into the 80 percent range, significantly more than competitive products. In the new millennium there will be a need for more efficient pumps. It will no longer be acceptable to settle for a pump operating at 50% - 60% efficiency. Cornell Pump Company has made these pumps obsolete.

Cornell's priming system was specifically designed with the environment in mind. By using a positive sealing float box and a diaphragm vacuum pump, there is absolutely no water carry-over to contaminate the environment. Cornell pumps are designed for the new millennium.

Energy Efficiency

Cornell Pumps are designed to deliver **best in class efficiency**. Depending on operating hours, fuelant, and horsepower required, you can save \$3,000 per year (or more) in energy costs. Cornell manufactures **more than 60 clear liquid and non-clog pumps** that meet or exceed optimum efficiency standards for centrifugal pumps.

Select High Efficiency Pump Models:

8H	-	88% efficient
6RB	-	89% efficient
5RB	-	86% efficient
4RB	-	85% efficient

BENEFITS

- Fully automatic self-priming, dry-prime pump.
- Handles air/liquid mixtures with ease.
- Rapidly primes and re-primers completely unattended.
- Environmentally safe priming system designed to prevent product leakage.
- Patented Cycloseal® and Run-Dry™ options.
- Handles large sized solids.
- High suction lift capability up to 28 feet.
- Premium hydraulic efficiency for reduced energy consumption.

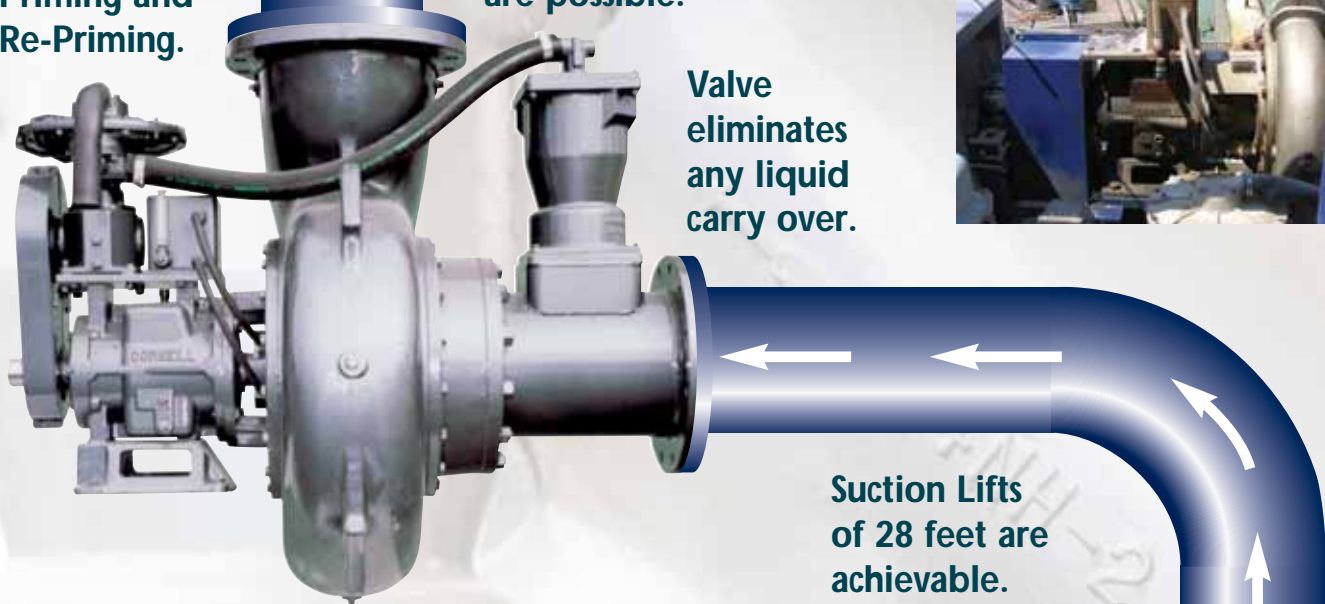


CORNELL REDI-PRIME®

Automatic Priming and Re-Priming.

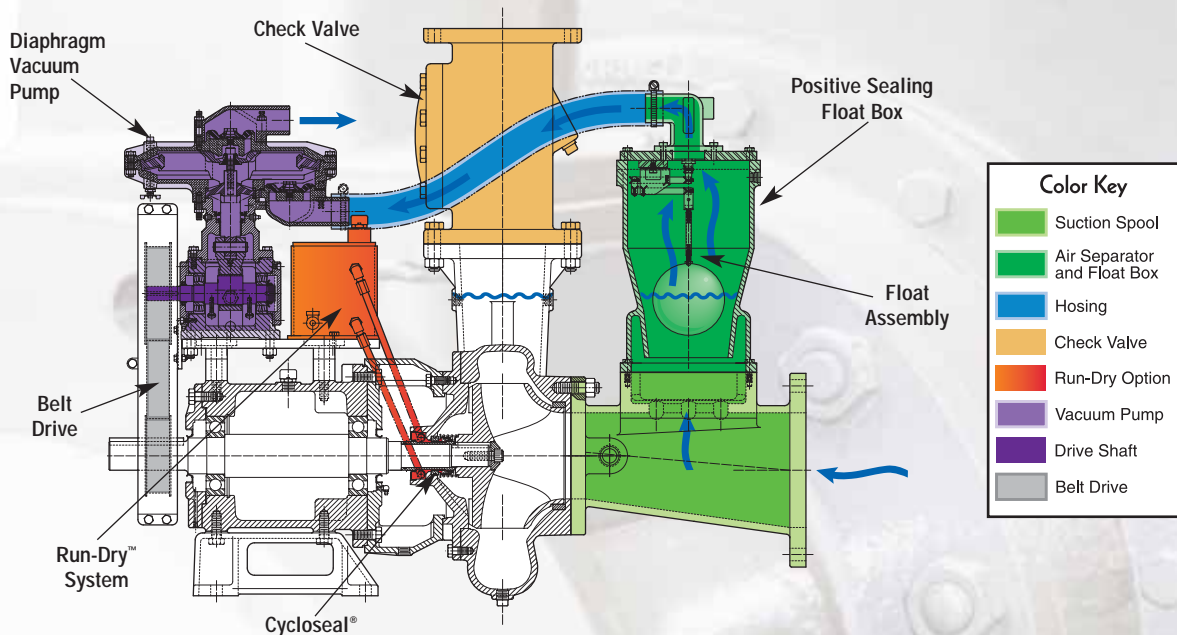
Heads of up to 470 feet are possible.

Valve eliminates any liquid carry over.

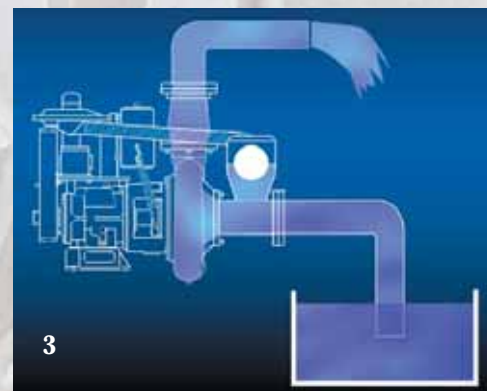
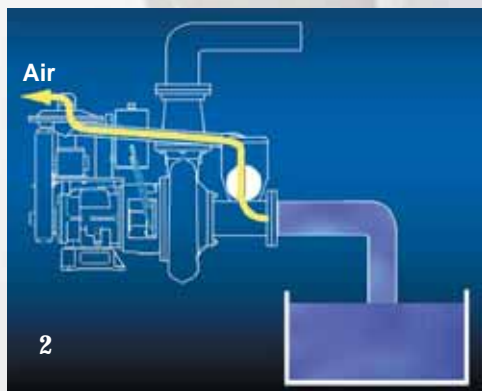
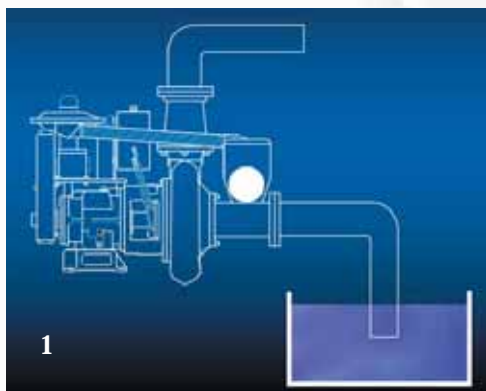


Suction Lifts of 28 feet are achievable.

REDI-PRIME® COMPONENTS



THE REDI-PRIME® SYSTEM



Cornell offers the widest range of pump sizes and capacities in the industry. No matter what your requirements are, Cornell can provide you with a package that will fill your needs – Clear Liquid pumps up to 10", Solids Handling pumps up to 30" and Slurry pumps up to 4".

EFFICIENCY

In addition to a dependable pump system, today's systems must also be efficient and economical.

As energy costs rise, conservation and efficiency of operation become critical issues for customers as they strive to minimize expenses associated with energy consumption. Cornell pumps maintain superb hydraulic operating efficiencies.

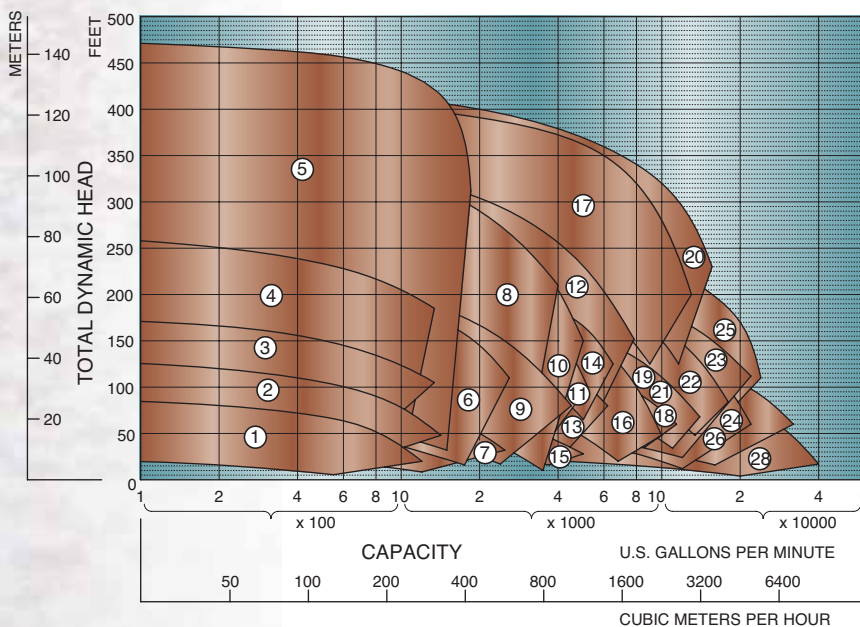
The bottom line – Cornell pumps cost less to operate.

Pump Options: Solids Handling Pumps

Model	Disch. Size	Max. Cap.	Max. Solids	Max. Head	Max. Suction Lift	RPM
4NNTL	4"	1,450 gpm	3"	175'	25'	2,500
4NNT	4"	1,400 gpm	3"	150'	25'	2,000
4NHTA	4"	1,400 gpm	3"	225'	25'	2,100
4414T	4"	1,400 gpm	3"	350'	25'	2,000
4NHTB	4"	1,600 gpm	3"	425'	25'	2,000
6NHTA	6"	2,700 gpm	3"	280'	25'	2,000
6NNT	6"	2,550 gpm	3"	150'	25'	2,100
6NHTB	6"	4,250 gpm	3.38"	350'	25'	1,800
8NNT	8"	4,500 gpm	3.38"	255'	25'	1,900
8NHTA	8"	5,000 gpm	3.38"	350'	25'	1,800
8NHTH	8"	6,250 gpm	4"	255'	25'	1,200
10NNT	10"	6,300 gpm	4"	340'	25'	1,800
10NHTB	10"	8,000 gpm	4.75"	195'	25'	1,200
10NHTA	10"	6,400 gpm	4.25"	245'	25'	1,200
12NHTL	12"	5,200 gpm	4.25"	140'	25'	1,500
12NNF	12"	8,500 gpm	3"	195'	25'	1,800
12NHG28	12"	12,000 gpm	3.2"	410'	25'	1,200
14NHG	14"	12,000 gpm	4"	210'	25'	1,500
14NHGH	14"	13,500 gpm	4.25"	145'	25'	1,200
14NHG28	14"	15,000 gpm	4.25"	430'	25'	1,200
16NHGH	16"	13,500 gpm	4.25"	175'	25'	1,200
16NHG22	16"	16,500 gpm	4.5"	265'	25'	1,200
18NHG	18"	22,000 gpm	5"	220'	25'	900
18NHFL	18"	26,000 gpm	5"	190'	25'	890
18NHF34	18"	22,000 gpm	4.5"	320'	25'	900
20NHFL	20"	18,000 gpm	5"	116'	25'	720
24NNG	24"	32,000 gpm	5.25"	135'	25'	750
30NNT	30"	38,000 gpm	10.2"	110'	25'	585



Solids Handling Enclosed Impeller, Redi-Prime® Curves



Redi-Prime® Models

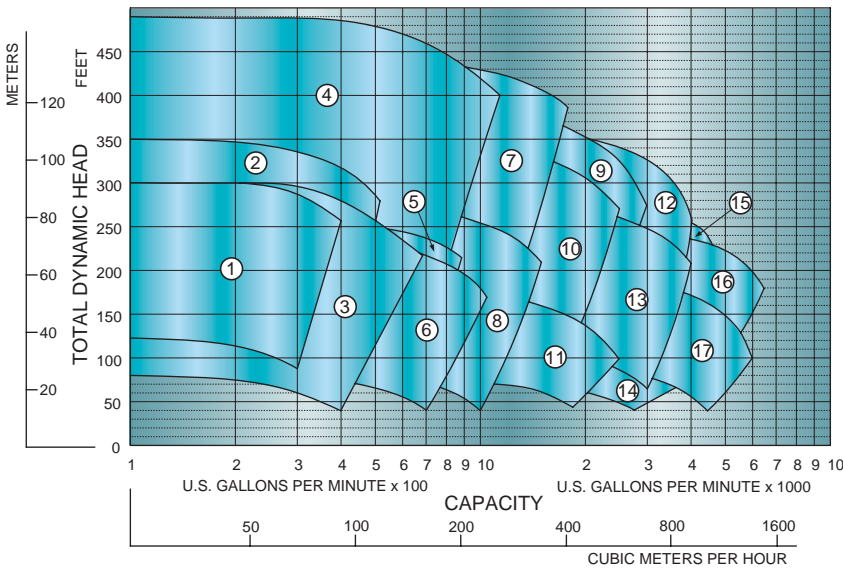
1. 4NNTL
2. 4NNT
3. 4NHTA
4. 4414T
5. 4NHTB
6. 6NHTA
7. 6NNT
8. 6NHTB
9. 8NNT
10. 8NHTA
11. 8NHTH
12. 10NNT
13. 10NHTB
14. 10NHTA
15. 12NHTL
16. 12NNF
17. 12NHG28
18. 14NHG
19. 14NHGH
20. 14NHG28
21. 16NHGH
22. 16NHG22
23. 18NHG
24. 18NHFL
25. 18NHF34
26. 20NHFL
27. 24NNG
28. 30NNT

Pump Options: Clear Liquid Pumps

Model	Disch. Size	Max. Cap.	Max. Solids	Max. Head	Max. Suction Lift	RPM
2.5RB	2.5"	400 gpm	.38"	300'	25'	2,200
2.5H	2.5"	500 gpm	.41"	360'	25'	2,200
2.5YH	2.5"	750 gpm	.41"	310'	28'	3,000
3HC/HA	3"	1,050 gpm	.5"	490'	28'	2,400
3RB	3"	800 gpm	.5"	280'	28'	2,200
3YL/YH	3"	1,100 gpm	.5"	245'	28'	2,700
4HC	4"	1,650 gpm	.62"	470'	28'	2,150
4RB	4"	1,550 gpm	.84"	270'	25'	2,200
5HH	5"	2,900 gpm	.75"	375'	25'	2,000
5RB	5"	2,350 gpm	1"	360'	25'	2,400
5YBH	5"	2,500 gpm	.75"	200'	25'	2,400
6HH	6"	4,000 gpm	1.22"	365'	25'	2,000
6RB	6"	4,250 gpm	1.31"	300'	28'	2,200
6YB	6"	4,100 gpm	.75"	235'	25'	2,400
8H	8"	5,400 gpm	1.25"	305'	25'	2,000
10RB	10"	7,000 gpm	1.25"	300'	25'	2,200
10YB	10"	6,500 gpm	1.38"	200'	25'	2,300



Clear Liquid Redi-Prime® Curves



Redi-Prime® Model

1. 2.5RB
2. 2.5H
3. 2.5YH
4. 3HC/HA
5. 3RB
6. 3YL/YH
7. 4HC
8. 4RB
9. 5HH
10. 5RB
11. 5YBH
12. 6HH
13. 6RB
14. 6YB
15. 8H
16. 10RB
17. 10YB

10/15/03



COMMITMENT TO EXCELLENCE

Cornell Pump Company proudly maintains its ISO 9001:2000 certification which validates that Cornell is in compliance with all necessary processes to meet customer requirements.

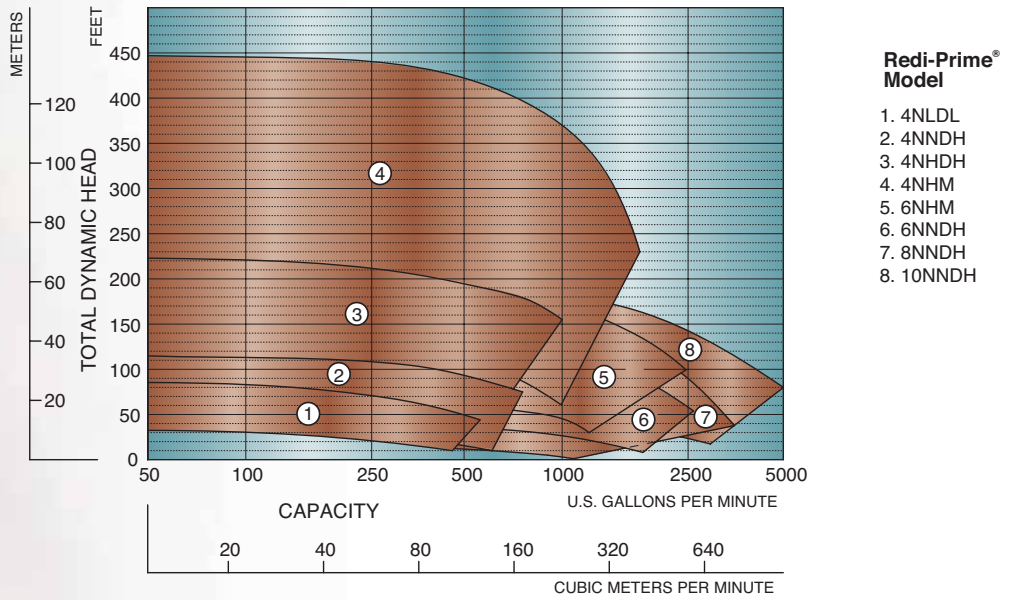
The elements associated with ISO 9001:2000 certification include such areas as contract review, design and development, production, purchasing, quality control and service.



Pump Options: Delta™ Impeller Pumps

Model	Disch. Size	Max. Cap.	Max. Solids	Max. Head	Max. Suction Lift	Max. RPM
4NLDL	4"	525 gpm	3"	85'	25'	2,000
4NNDH	4"	750 gpm	3"	115'	25'	1,800
4NHDH	4"	1,050 gpm	3"	225'	25'	1,800
4NHM	4"	1,500 gpm	2.5"	380'	25'	2,200
6NHM	6"	2,500 gpm	3"	320'	25'	2,200
6NNDH	6"	2,400 gpm	3"	140'	25'	2,200
8NNDH	8"	1,625 gpm	3.38"	50'	25'	1,200
10NNDH	10"	5,000 gpm	3.5"	190'	25'	1,500

Solids Handling, Delta Impeller, Redi-Prime® Curves



10/31/06

CYCLOSEAL® & RUN-DRY™

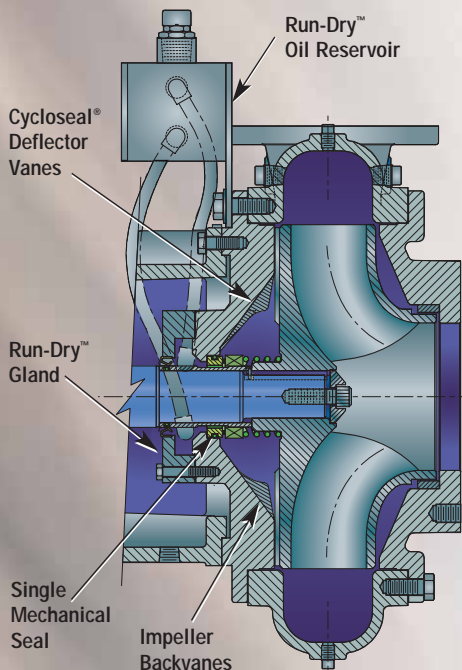
Cornell's patented Cycloseal® design, with its unique deflector vanes, works with the impeller back vanes to create a cyclo-action. This action removes solids and abrasive materials from the seal area while purging air and gas pockets, extending seal life and eliminating any need for venting or waterflushing.

CYCLOSEAL® BENEFITS

Extended Seal Life: Cornell's Cycloseal® design has proven itself in the toughest applications from manure slurry to starch recovery to sewer bypass and mining applications – in some cases more than tripling the normally expected mechanical seal life.

RUN-DRY™ CAPABILITY

Cornell's Run-Dry™ system consists of an auxiliary gland which provides containment for an application-specific lubricant present at the inside diameter of the mechanical seal faces. This lubricant prevents dry running of the seal faces while priming, re-priming, and on standby. The Run-Dry™ gland is connected to a lubricant reservoir via inlet and outlet lines which are oriented tangentially to the pump shaft so that shaft rotation provides circulation and subsequent cooling of the lubricant.

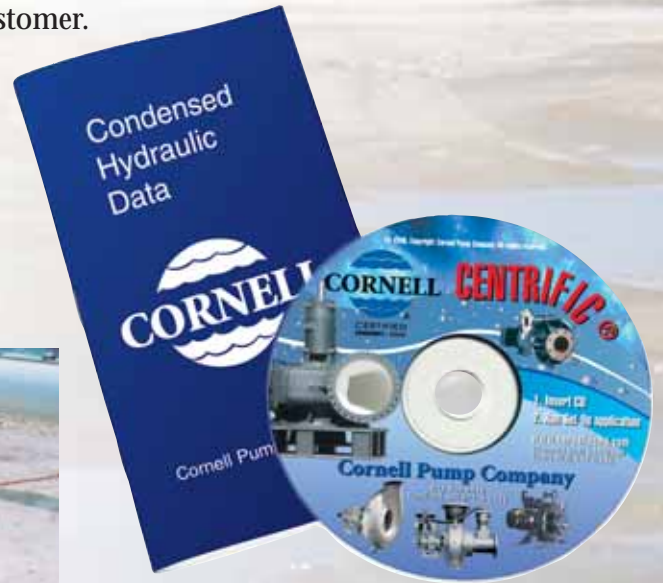


TRAINING

Informed Decisions

At Cornell we believe a well-informed customer is our best customer. That's why Cornell provides a wide range of training and selection materials including our Centrific® software.

The Centrific® selection program will help you select the correct Cornell pump for a given set of operating conditions. The program also includes energy usage and efficiency comparisons.



PUTTING IDEAS TO THE TEST

Test Lab

Cornell's test lab is the proving ground for all of our pumps where our goal is to engineer and manufacture the best performing, most efficient pumps on the market. Test Lab technicians, under the supervision of Registered Professional Engineers, perform research and development as well as conduct certified performance, NPSH, and vibration testing.

The focal point of the test lab is an 80,000 gallon open loop testing system with calibrated flow meters from 2.5" through 20" in size. In our closed loop testing system, with flow meters up to 36" diameter, we can test pumps up to 60,000 gallons per minute.

The test lab is also equipped with an 800 HP VFD and multiple transformers to test motors with voltages ranging anywhere from 120 to 4160 volts. For motor sizes above 800 HP we use a portable generator.





Cornell Pump Company

Portland, Oregon U.S.A.

Phone: (503) 653-0330
Fax: (503) 653-0338
Web: www.cornellpump.com

Typical Redi-Prime® Applications

Industrial Market

- Abrasive transfer
- Automotive
- Canneries
- Chemical sludge
- Construction
- De-watering
- Drain water
- Dredging
- Effluent
- Environmental treatment
- Food processing plants
- Foundry or mill slag
- Industrial plant waste
- Landfills
- Lumber mills
- Marine
- Mining
- Petro chemical plants
- Pulp and paper
- Refineries
- Rendering plants
- Rental
- Scavenging
- Slurries
- Soil reclamation
- Wastewater bypass
- Well pointing

Municipal Market

- Abrasive transfer
- Raw sewage
- Return activated sludge
- Sewage bypass
- Sludge transfer
- Standby service
- Utilities
- Waste activated sludge

Agricultural Market

- Manure handling
- Manure slurry handling
- Waste flush systems

Cycloseal® and Redi-Prime® are Registered Trademarks of Cornell Pump Company.

CERTIFIED TO **ISO 9001:2000**



The Cornell Product Line:

Agricultural



IRRIGATION & SLURRY

Industrial



PROCESSING



FOOD



REFRIGERATION

Municipal



WASTE WATER & CONSTRUCTION



HYDRO-ENERGY

All Markets



RENTAL