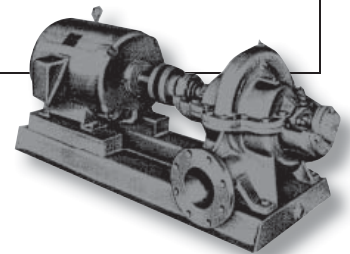
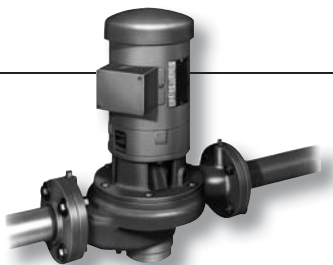


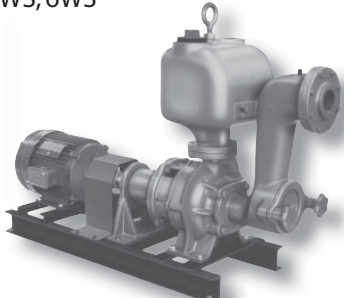


Full-Line Products Overview

	<i>In-Line</i>	<i>End Suction</i>	<i>Horizontal Split Case Single & Multi-Stage</i>
Applications	Heating, air conditioning, industrial, hydronic heating & cooling systems, & liquid circulation	General water service, domestic water booster system, chilled & hot water systems, cooling tower, sprinkler & irrigation systems	
Capacities to	1,500gpm (95L/s)	2,000gpm (126L/s)	6,000gpm (378L/s)
Heads to	350' (107m)	260' (79m)	460' (140m)
Power	.50-60hp (.38-45kW)	.33-60hp (.25-45kW)	1-300hp (.75-224kW)
Construction Features	<ul style="list-style-type: none"> • Bronze Impellers • Back pull-out design • Mechanical seal • Internal seal flush • NEMA JM drip proof motor • Removable bronze wear ring • Standard 125lb ANSI flange • Pressure gauge tapings at suction & discharge flange 	<ul style="list-style-type: none"> • Direct drive, motor operated • Bronze impeller • Extra deep stuffing box with seal cage (G, K) • Renewable bronze shaft sleeve (G, K) • Renewable bronze suction cover ring (G, K) • Cast iron case • Type AC & AE pumps can be furnished with square suction flange for tank mounting • Bronze, one piece impeller 	<ul style="list-style-type: none"> • Entire rotating element can be removed without disturbing pipe connections or driver • Extra deep stuffing box with split glands • Balanced axial & radial thrust bearings • Seal cages • Clockwise or counter clockwise rotation
Optional Materials	<ul style="list-style-type: none"> • Standard bronze fitted • Ductile iron casing • TEFC motors • Ceramic or hi temp tungsten carbide seals • Stainless steel shaft seal • 250# Flanges 	<ul style="list-style-type: none"> • Standard bronze fitted • Ductile iron casing • Mechanical seals for various applications and temperatures • Packed stuffing box • External flushing • Shaft sleeves-bronze or stainless steel 	<ul style="list-style-type: none"> • Standard all iron • Ductile iron casing • Mechanical seals, double wear rings, stainless steel shaft sleeves • Vertical mounting available
Models	1507CV, 2007CV, 2095CV, 2507CV, 2595CV, 3007CV, 3095CV, 4007CV, 4095CV, 6012CV	100, 120, & 200; 4AC, 4AE, 6AC, 6AE, 8AC, 4ACV, 4AEV, 6ACV, 6ADV, 6AFV, 8ACV; 310 & 500; BL, BM, BH, B, BT, BX, G, G-B, GH, GH-B, GT, GL, GL-B, K, K-B, KH, KH-B, KL & KL-B	2L, 3L, 4L, 5L, 6L, 8L, 10L, 12L, 1.5JD, 2JD, 3JD



	Condensate Return	Sump & Sewage	Recessed Impeller Vortex
Applications	Condensate returns systems and boiler feed applications	Sump water ejection sewage/solids non-clog ejector systems	For pumping solids up to maximum size capable of passing through the pipe
Capacities to	150gpm (9.5L/s)	2,000gpm (126L/s)	1,200gpm (76L/s)
Heads to	231' (71m)	100' (30m)	115' (35m)
Power	.33-15hp (.25-11kW)	.33-30hp (.25-22kW)	5-70hp (3.75-52kW)
Construction Features	<ul style="list-style-type: none"> • Water gauge • Drip proof motors • Steel venting piping • Mechanical seal designed for full range of temperatures • Bronze impeller • Top pull-out without disturbing piping • Float switches or alternator 	<ul style="list-style-type: none"> • Column pipe has counterbore for accurate alignment • Individual grease lines to bottom and intermediate bearings • Semi-open impeller with repelling vanes on back side • Angular contact thrust bearing • Designed to allow through only solids which will not clog impeller • Drive shaft is ground and polished steel of sufficient size to prevent whipping • Flexible coupling 	<ul style="list-style-type: none"> • All cast iron • Single mechanical seal • Heavy duty bearing housing • Fast access clean out port
Optional Materials	<ul style="list-style-type: none"> • Simplex & Duplex steel receiver to 400 gallons. • Motor controls mounted and pre-wired 	<ul style="list-style-type: none"> • Various drive shafts and column lengths • Type 304 stainless steel shaft • Cutless rubber bearing • Watertight or explosion proof resistant float switch or alternator • Stainless steel float and rod • Motor controls 	<ul style="list-style-type: none"> • Stainless steel impeller and shaft
Models	20C, 30C, 45C, 67C, 6S, 10S, 20S, 30S, 45S, 60S, 80S, 100S, 125S, 150S, 200S, 300S, 400S 	S and SA MG-VS SM-VS SML-VS 	2WSC, 3WSC, 2WC, 3WC, 2WS, 3WS, 2W, 3W, 4W, 6W, 4WS-VB, 6WS-VB, 4WS, 6WS 

CRANE PUMPS & SYSTEMS

A Crane Co. Company

Crane Pumps & Systems
 420 Third Street
 Piqua, Ohio 45356
 Phone: (937) 778-8947
 Fax: (937) 773-7157
 www.cranepumps.com

Crane Pumps & Systems Canada
 83 West Drive
 Brampton, Ont. Canada L6T 2J6
 Phone: (905) 457-6223
 Fax: (950) 457-2650

© 2010 Crane Pumps & Systems, Inc.
 A Crane Co. Company
 Printed in U.S.A.
 WFLCAT - Rev. C (8/10)